

THE BOROUGH COUNCIL OF KING'S LYNN AND WEST NORFOLK
(OFF-STREET PARKING PLACES) ORDER 2016

The Borough Council of King's Lynn and West Norfolk has made an Order in part (excluding Lime Grove car park for which a decision is to be deferred) to introduce the Order referred to above which will have the effect of varying the Borough Council of King's Lynn and West Norfolk (Off-street parking places)(No 2) Order 2015 under its powers contained in the Road Traffic Regulation Act 1984. The Order comes into affect on the 1st April 2016. The general effect of the Order is:

- (i) to add new car parks (except Lime Grove car park) as specified in schedule 1 below;
- (ii) to introduce payment for disabled parking at Queen Elizabeth Hospital car parks as specified in schedule 2 below; and
- (iii) reproduce the contents of The Borough Council of King's Lynn and West Norfolk (Off-Street Parking Places) Order 2015 as varied by this Order.

A copy of the documents giving more detailed particulars of the proposed Order including the Draft Order and plans may be inspected at the Borough Council of King's Lynn and West Norfolk, King's Court, Chapel Street, King's Lynn and at Norfolk County Council, County Hall, Martineau Lane, Norwich during normal office hours.

Any person who desires to question the validity of the Order or of any provision contained in it on the grounds that it is not within the powers conferred by the Road Traffic Regulation Act 1984, or on the grounds that any requirement of that Act, or of any instrument made under it, has not been complied with in relation to the Order, may within six weeks from 1st April 2016 apply to the High Court for this purpose.

SCHEDULE 1 NEW CAR PARKS

Name and location of parking place	Classes of vehicles able to park in the parking place	Hours of operation	Charges for use or permits
Burnham Market Car Park - Burnham Market	Motor car, motor cycle and disabled person's vehicle displaying a disabled person's badge	24 hour car park but limited time charges - Monday to Sunday 08:00 – 18:00 hrs (including Bank holidays except Christmas day)	£1.20 for up to 1 hour £1.80 for up to 3 hours £3.00 for up to 5 hours £4.20 for up to 24 hours Long term season ticket (month) £26.25 Long term season ticket (annual) £245.00 Traders long-term season ticket

(month) £13.20 Only available for purchase up to 31st March 2017 then the standard season ticket charge applies.

Traders long-terms season ticket (annual) £122.50 Only available for purchase up to 31st March 2017 then the standard season ticket charge applies.

Centre Point Car Park	Motor car, motor cycle and disabled person's vehicle displaying a disabled person's badge	Monday to Sunday At All Times	Free to Park
Line Grove Car Park	Motor car, motor cycle and disabled person's vehicle displaying a disabled person's badge	Monday to Sunday At All Times	Free to Park
Mulberry Road Car Park	Motor car, motor cycle and disabled person's vehicle displaying a disabled person's badge	Monday to Sunday At All Times	Free to Park
St Ann's Fort Car Park	Motor car, motor cycle and disabled person's	Monday to Sunday At All Times	St Ann's Fort - Permit Holders only £740.00 per annum

vehicle
displaying a
disabled
person's
badge

William Street Car Park	Motor car, motor cycle and disabled person's vehicle displaying a disabled person's badge	Monday to Sunday At All Times	Free to Park
----------------------------	---	-------------------------------------	--------------

SCHEDULE 2

This Order proposes to amend the costs for parking a disabled person's vehicle in the following car parks which are located within the Queen Elizabeth Hospital: Main Car Park, MacMillan Parking, Day Surgery Car Park, Bus Stop/Tennis Court Car Park, Disabled Main Car Park, Disabled Parking Place. The cost for parking a disabled person's vehicle in any of these car parks is proposed to be £2.00 for up to 24 hours parking

The Borough Council of King's Lynn and West Norfolk

Note: Information you send to the Council will be used for any purpose connected with the making or confirming of the proposed Order and will be held as long as reasonably necessary for those purposes. It may also be released to others in response to freedom of information requests.

FK/SMC/klbcnotice2016/hasmade

THE BOROUGH COUNCIL OF KING'S LYNN AND WEST NORFOLK
(OFF-STREET PARKING PLACES) ORDER 2016

The Borough Council of King's Lynn and West Norfolk, in exercise of their powers under sections 32, 35, 38 and with the consent of Norfolk County Council under section 39 of the Road Traffic Regulation Act, 1984 (hereinafter referred to as "the 1984 Act"), Part 6 of the Traffic Management Act 2004 ("hereinafter referred to as the 2004 Act") and of all other enabling powers, and after consultation with the Chief Officer of Police in accordance with Parts I to III of Schedule 9 to the Act, hereby make the following Order.

Citation and Commencement

1. This Order shall come into operation on the 1st April 2016, and may be cited as The Borough Council of King's Lynn and West Norfolk (Off-Street Parking Places) Order 2016.
2. The Borough Council of King's Lynn and West Norfolk (Off-Street Parking Places) (No 2) Order 2015 (hereinafter referred to as the "2015 Order") is amended as detailed in Articles numbered 3 and 4 below.
3. The following definitions in Part 1 Article 2 are amended to insert as follows
The definition of "charging hours" is amended to change the number of Schedules "1 to 3" to "1,2,3 and 6"

The definition of "parking place" is amended to change the number of Schedules "1 to 3" to "1,2,3 and 6"

The definition of "parking charge" is amended to change the number of Schedules "1 to 3" to "1,2,3 and 6"

4. Schedule 1 of columns 1 to 6 of the 2015 Order are amended by the addition of:
 - i. the wording contained in the same numbered columns of the table shown in Schedule 1 of this Order St Ann's Fort Car Park column 6 to include the exception "Motorcycles are free to park"
 - ii. and scale of charges specified in column 6 of Schedule 1 of the 2015 Order for parking a disabled person's vehicle displaying a disabled persons badge in the car parks which are located within Queen Elizabeth Hospital as shown in the table below in Schedule 1 under the heading "Queen Elizabeth Car Park".

5. The 2015 Order is amended to include Schedule 6 which is for Burnham Market Car Park as shown in the table below.

IN THE BOROUGH OF KING'S LYNN AND WEST NORFOLK
SCHEDULE 1

1	2	3	4	5	6
Name and Location of Parking Place	Classes of Vehicles	Position in which Vehicles may wait	Days of Operation of Parking Place	Charging Periods at Parking Place	Scale of Charges within that Charging Period
48. Centre Point Car Park	Motor car, motor cycle and disabled person's vehicle displaying a disabled person's badge	Wholly within parking bays where marked at the parking place	Monday to Sunday (including Bank Holidays except Christmas Day)	Monday to Sunday At All Times	Free to Park
50. Mulberry Road Car Park	Motor car, motor cycle and disabled person's vehicle displaying a disabled person's badge	Wholly within parking bays where marked at the parking place	Monday to Sunday (including Bank Holidays except Christmas Day)	Monday to Sunday At All Times	Free to Park
51. St Ann's Fort Car	Motor car, motor	Wholly within	Monday to Sunday	Monday to Sunday	St Ann's Fort – Permit

1	2	3	4	5	6
Name and Location of Parking Place	Classes of Vehicles	Position in which Vehicles may wait	Days of Operation of Parking Place	Charging Periods at Parking Place	Scale of Charges within that Charging Period
Park	cycle and disabled person's vehicle displaying a disabled person's badge	parking bays where marked at the parking place	(including Bank Holidays except Christmas Day)	At All Times	Holders only 40.00 per year Motorcycles are free to park
52. William Street Car Park	Motor car, motor cycle and disabled person's vehicle displaying a disabled person's badge	Wholly within parking bays where marked at the parking place	Monday to Sunday (including Bank Holidays except Christmas Day)	Monday to Sunday At All Times	Free to Park

<u>Queen Elizabeth Car Park</u>					
1	2	3	4	5	6

Name and Location of Parking Place	Classes of Vehicles	Position in which Vehicles may wait	Days of Operation of Parking Place	Charging Periods at Parking Place	Scale of Charges within that Charging Period
32. Queen Elizabeth Hospital King's Lynn Main Car Park White and Blue Bays	Disabled person's Vehicle displaying a Disabled person's Badge	Wholly within the parking bays where marked at the parking place	Monday to Sunday	Monday to Sunday At All Times	2.00 for up to 24 hours
White Bays	Disabled person's Vehicle displaying a Disabled person's Badge	Wholly within the parking bays where marked at the parking place	Monday to Sunday	Monday to Sunday At All Times	2.00 for up to 24 hours
32D. Queen Elizabeth Hospital MacMillan Parking Place	Disabled Person's vehicles displaying a Disabled Person's Badge	Wholly within the parking bays where marked at the parking place	Monday to Sunday	Monday to Sunday At All Times	2.00 for up to 24 hours
32E. Queen Elizabeth Hospital Day Surgery Car Park	Disabled Person's Vehicles displaying a Disabled Person's Badge	Wholly within the parking bays marked at the parking place	Monday to Sunday	Monday to Sunday At All Times	2.00 for up to 24 hours
32F. Queen Elizabeth Hospital Bus Stop/Tennis Court Car Park	Disabled Person's Vehicles displaying a Disabled Person's Badge	Wholly within the parking bays marked at the parking place	Monday to Sunday	Monday to Sunday At All Times	2.00 for up to 24 hours
32G. Queen Elizabeth Hospital Disabled Main Car	Disabled Person's Vehicles displaying a Disabled Person's	Wholly within the parking bays marked at the	Monday to Sunday	Monday to Sunday At All Times	2.00 for up to 24 hours

Park	Badge	parking place	Monday to Sunday	Monday to Sunday At All Times	2.00 for up to 24 hours
32H. Queen Elizabeth Hospital Disabled Parking Place	Disabled Person's Vehicles displaying a Disabled Person's Badge	Wholly within the parking bays marked at the parking place	Monday to Sunday	Monday to Sunday At All Times	2.00 for up to 24 hours

IN THE PARISH OF BURNHAM MARKET
SCHEDULE 6

1	2	3	4	5	6
Name and Location of Parking Place	Classes of Vehicles	Position in which Vehicles may wait	Days of Operation of Parking Place	Charging Periods at Parking Place	Scale of Charges within that Charging Period
48. Burnham Market Car Park – Burnham Market	Motor car, motor cycle and disabled person's vehicle displaying a disabled person's badge	Wholly within parking bays where marked at the parking place	24 hour car park but limited time charges	Monday to Sunday 08:00 – 18:00 hrs (including Bank holidays except Christmas Day	<p>1.20 for up to 1 hour 1.80 for up to 3 hours 3.00 for up to 5 hours 4.20 for up to 24 hours</p> <p>Long term season ticket (month) 26.25</p> <p>Long term season ticket (annual) 245.00</p> <p>Traders long-term season ticket (month) 13.20 Only available for purchase up to 31st March 201 then the</p>

						standard season ticket charge applies. Traders long-term season ticket (annual) 122.50 Only available for purchase up to 31 st March 201 then the standard season ticket charge applies.
--	--	--	--	--	--	--

Dated this 31st March 2016

THE COMMON SEAL of)
 THE BOROUGH COUNCIL OF)
 KING'S LYNN AND WEST NORFOLK)
 was hereunto affixed in the)
 presence of)


 Duly Authorised Signatory

FK/King'sLynnorder2016

Legal Services Manager

14031





Borough Council of
**King's Lynn &
West Norfolk**



Tel: (01553) 616671 Fax: (01553) 616687
Email: f.dunn@kingslyn.gov.uk

Title
William Street Carpark



Scale
1:1250

Date
28/01/2013

Project / Details
Car Park Location Plan

Drawn by
JG

Drawing / Reference Number

This map is reproduced from Ordnance Survey material with the permission of Ordnance Survey on behalf of the Controller of Her Majesty's Stationary Office
© Crown copyright and database rights 2012 Ordnance Survey 100024314



Borough Council of
**King's Lynn &
West Norfolk**



Tel: (01553) 616200 Fax: (01553) 616682
Email: EDandP@west-norfolk.gov.uk

Title
Mulberry Road Car Park



Scale
1/500 @ A4

Date
17/09/2015

Project / Details
Parking Order

Drawn by
JG

Drawing / Reference Number
N/A

This map is reproduced from Ordnance Survey material with the permission of Ordnance Survey on behalf of the Controller of Her Majesty's Stationary Office
© Crown copyright and database rights 2015 Ordnance Survey 100024314



Borough Council of
**King's Lynn &
West Norfolk**



Tel: (01553) 616200 Fax: (01553) 616692
Email: EDandP@west-norfolk.gov.uk

Title
Centre Point Car Park,



Scale
1:500 @ A4

Date
17-09-2015

Project / Details
Parking Order

Drawn by
JG

Drawing / Reference Number
N/A

This map is reproduced from Ordnance Survey material with the permission of Ordnance Survey on behalf of the Controller of Her Majesty's Stationary Office
© Crown copyright and database rights 2015 Ordnance Survey 100024314



Borough Council of
**King's Lynn &
West Norfolk**



Tel: (01553) 621911 Fax: (01553) 616682
Email: enquiries@kingslyn.gov.uk

Title
St Ann's Fort Car Park



Scale
1/1250 @ A4

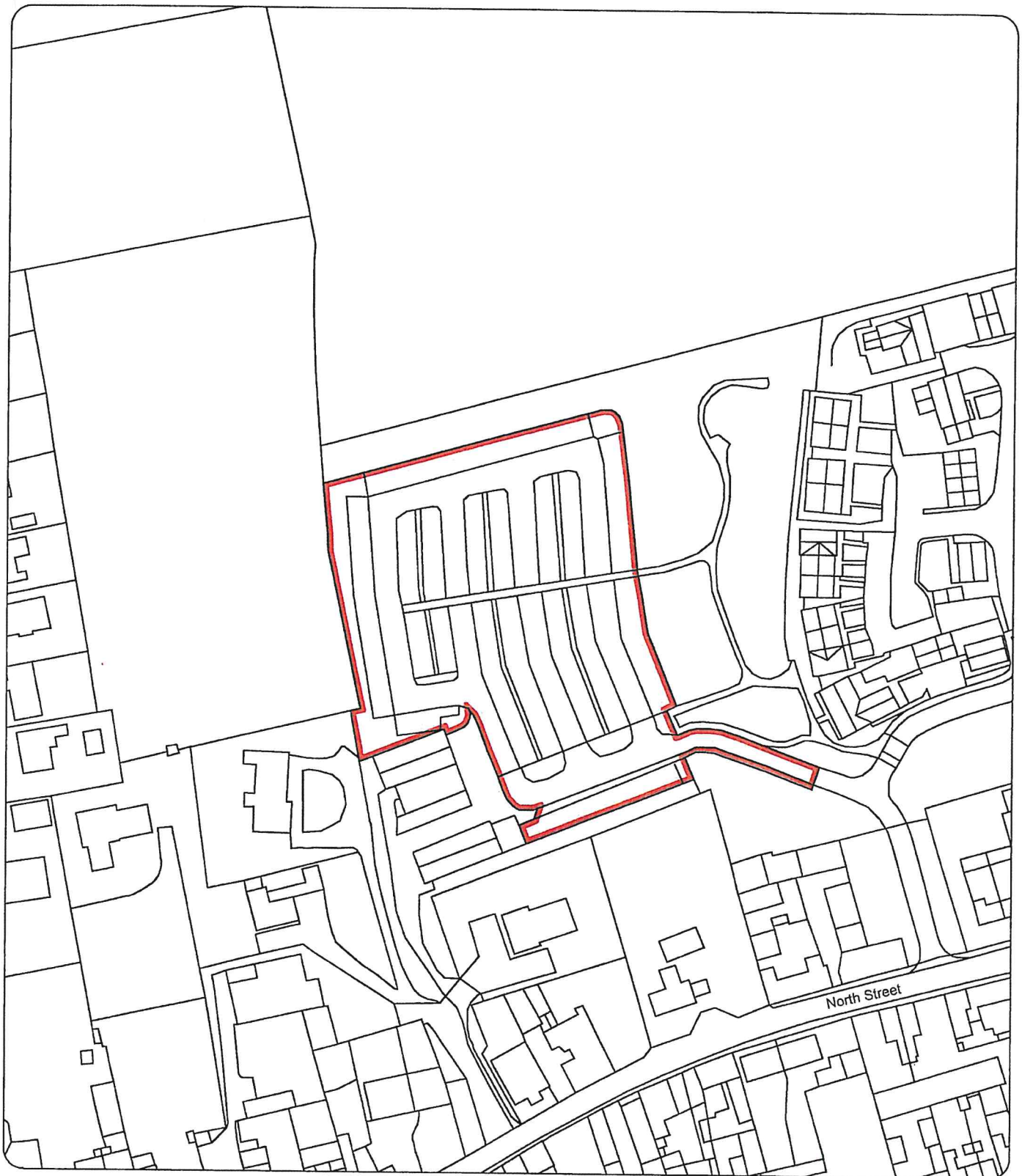
Date
19 June 2015

Project / Details
Parking Order

Drawn by
JG

Drawing / Reference Number
N/A

This map is reproduced from Ordnance Survey material with the permission of Ordnance Survey on behalf of the Controller of Her Majesty's Stationary Office
© Crown copyright and database rights 2015 Ordnance Survey 100024314



**Borough Council of
King's Lynn &
West Norfolk**



Tel: (01553) 616200 Fax: (01553) 616682
Email: EDandP@west-norfolk.gov.uk

Title
Burnham Market Carpark



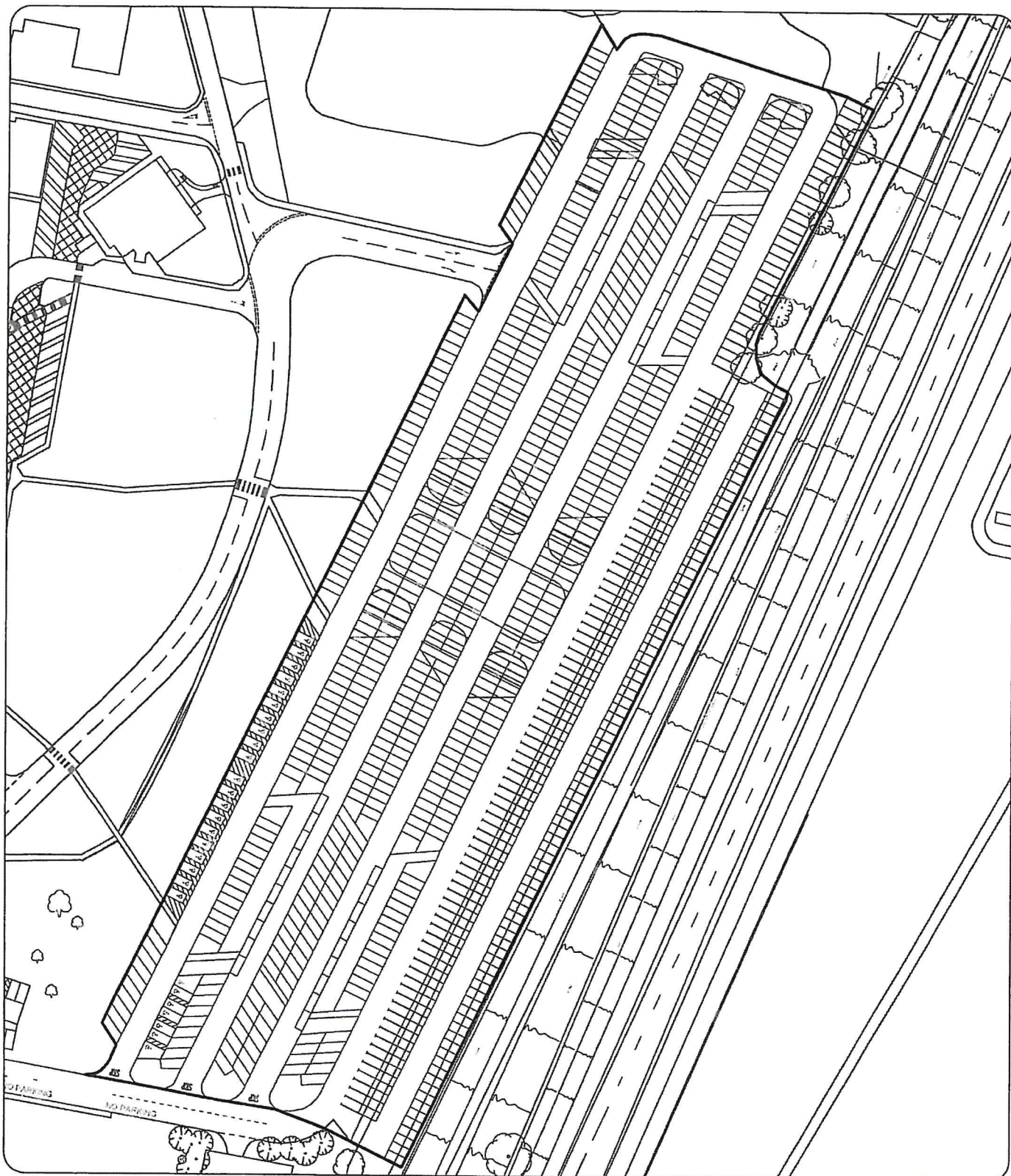
Scale
1/1250 @ A4

Date
17-DEC-2015

Project / Details
Parking Order

Drawn by
JG

Drawing / Reference Number
BMCP/PO - Rev 1



**Borough Council of
King's Lynn &
West Norfolk**



Tel: (01553) 616200 Fax: (01553) 616682
Email: EDandP@west-norfolk.gov.uk

Title
QEH - Main Car Park



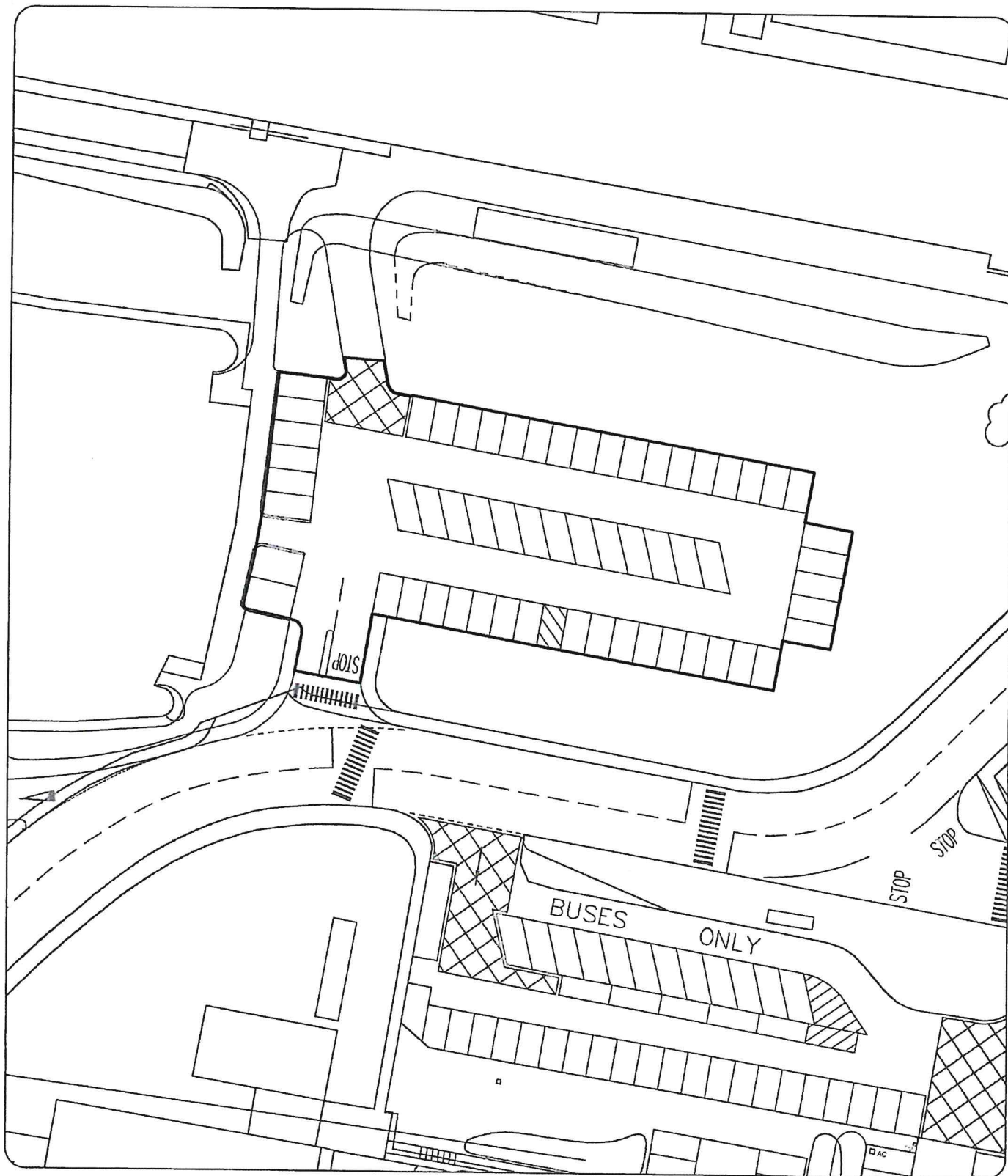
Scale
1/1250 @ A4

Date
11 Nov 2014

Project / Details
Parking Order

Drawn by
JG

Drawing / Reference Number



Borough Council of
**King's Lynn &
West Norfolk**



Tel: (01553) 616200 Fax: (01553) 616682
Email: EDandP@west-norfolk.gov.uk

Title
QEH - Day Surgery
Car Park



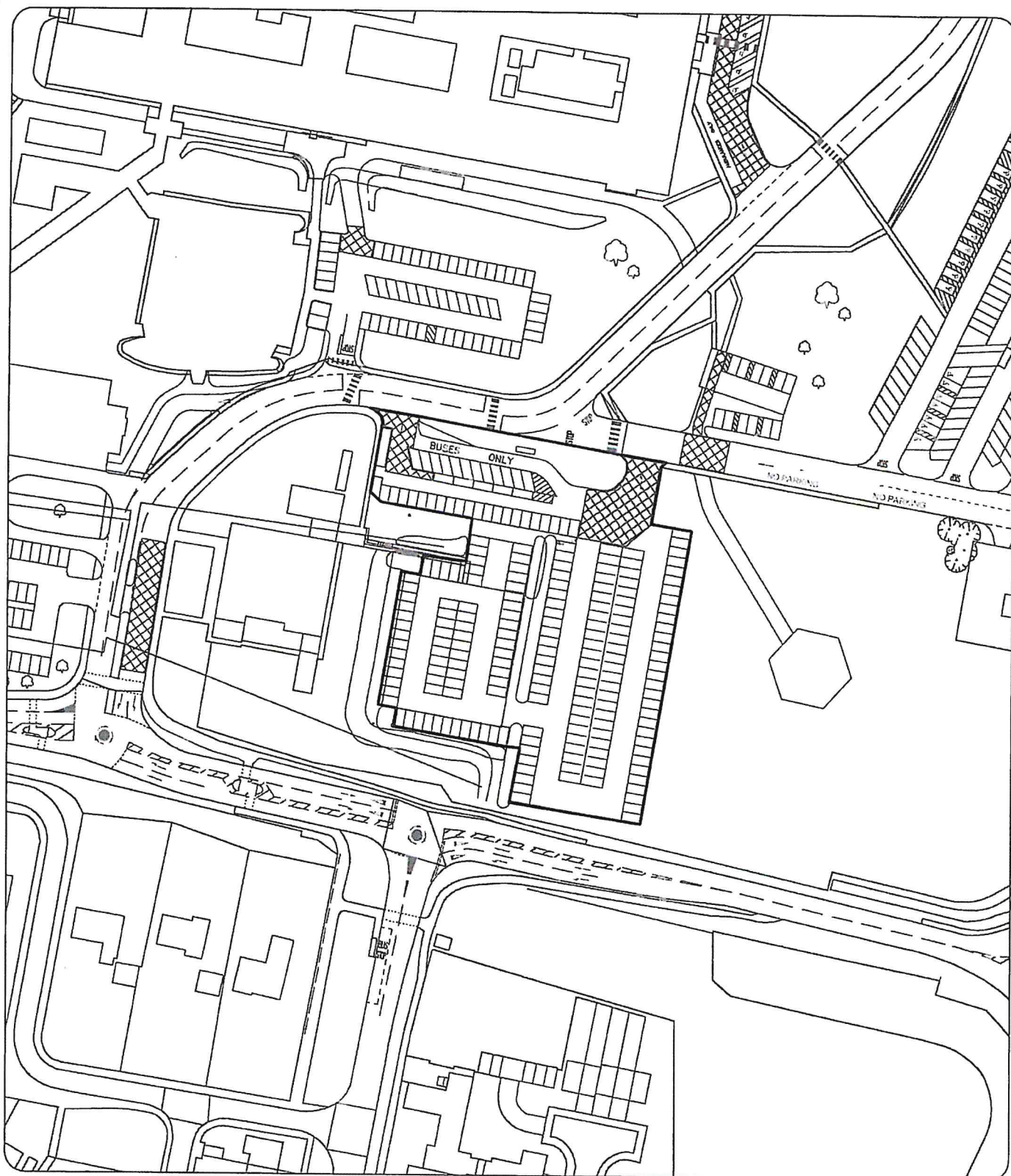
Scale
1/500 @ A4

Date
08 Jan 2015

Project / Details
Parking Order

Drawn by
JG

Drawing / Reference Number



**Borough Council of
King's Lynn &
West Norfolk**



Tel: (01553) 616200 Fax: (01553) 616682
Email: EDandP@west-norfolk.gov.uk

Title
QEH - Bus Stop / Tennis Court
Car Park



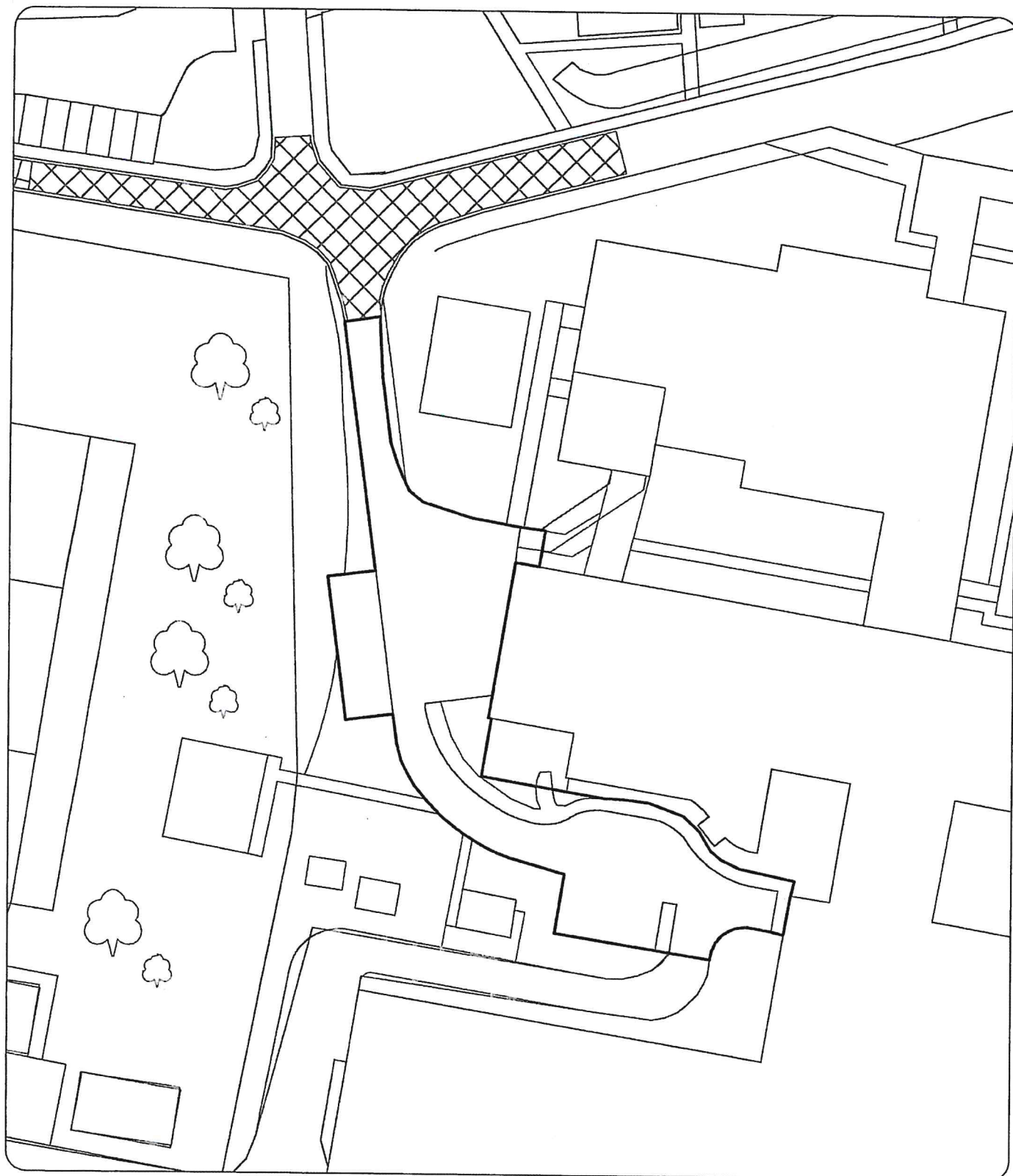
Scale
1/1250 @ A4

Date
08 Jan 2015

Project / Details
Parking Order

Drawn by
JG

Drawing / Reference Number



Borough Council of
**King's Lynn &
West Norfolk**



Tel: (01553) 616200 Fax: (01553) 616682
Email: EDandP@west-norfolk.gov.uk

Title
QEH - Macmillan
Parking Place



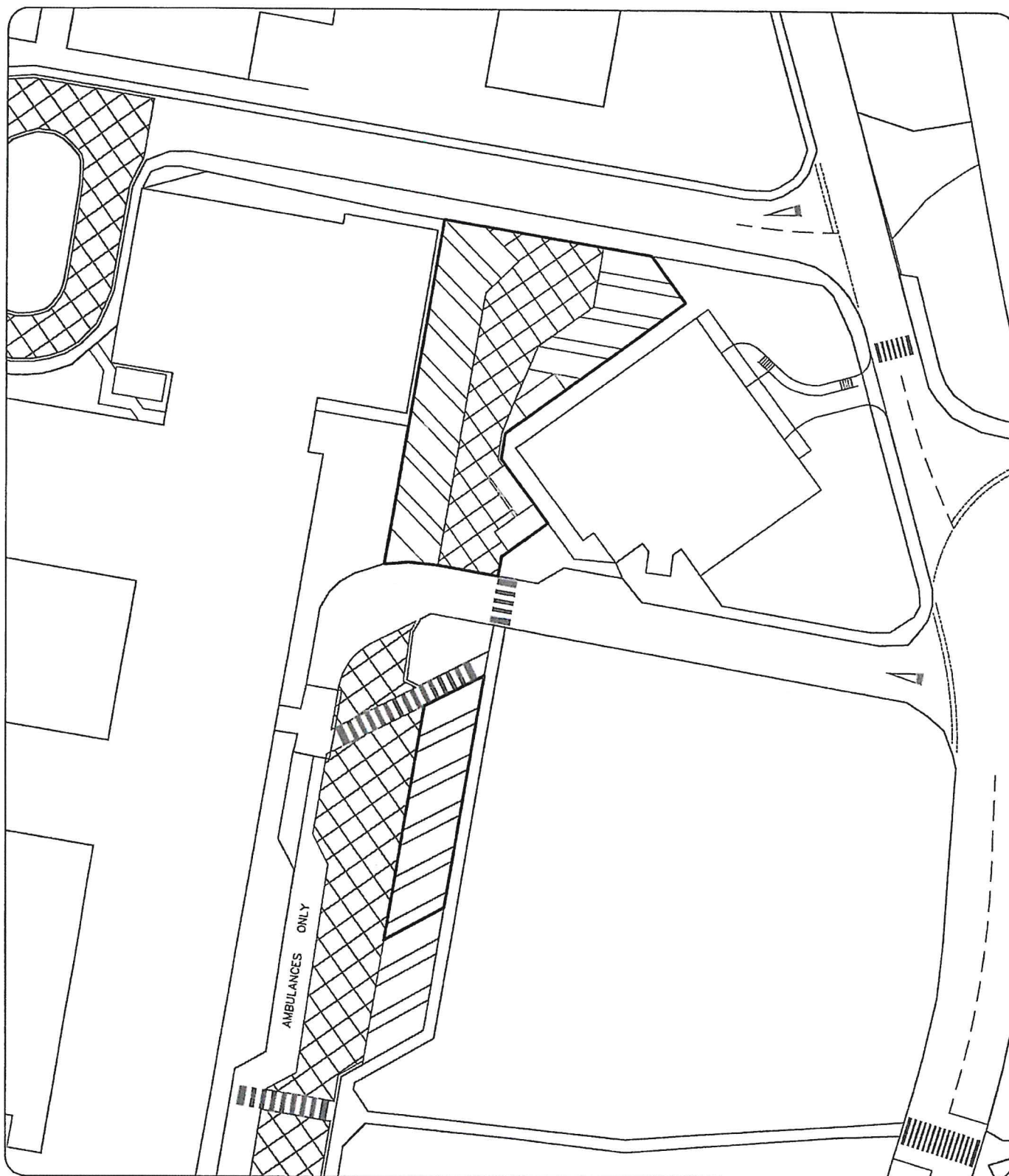
Scale
1/500 @ A4

Date
08 Jan 2015

Project / Details
Parking Order

Drawn by
JG

Drawing / Reference Number



Borough Council of
**King's Lynn &
West Norfolk**



Tel: (01553) 616200 Fax: (01553) 616682
Email: EDandP@west-norfolk.gov.uk

Title
QEH - Disabled Parking Place

Project / Details
Parking Order

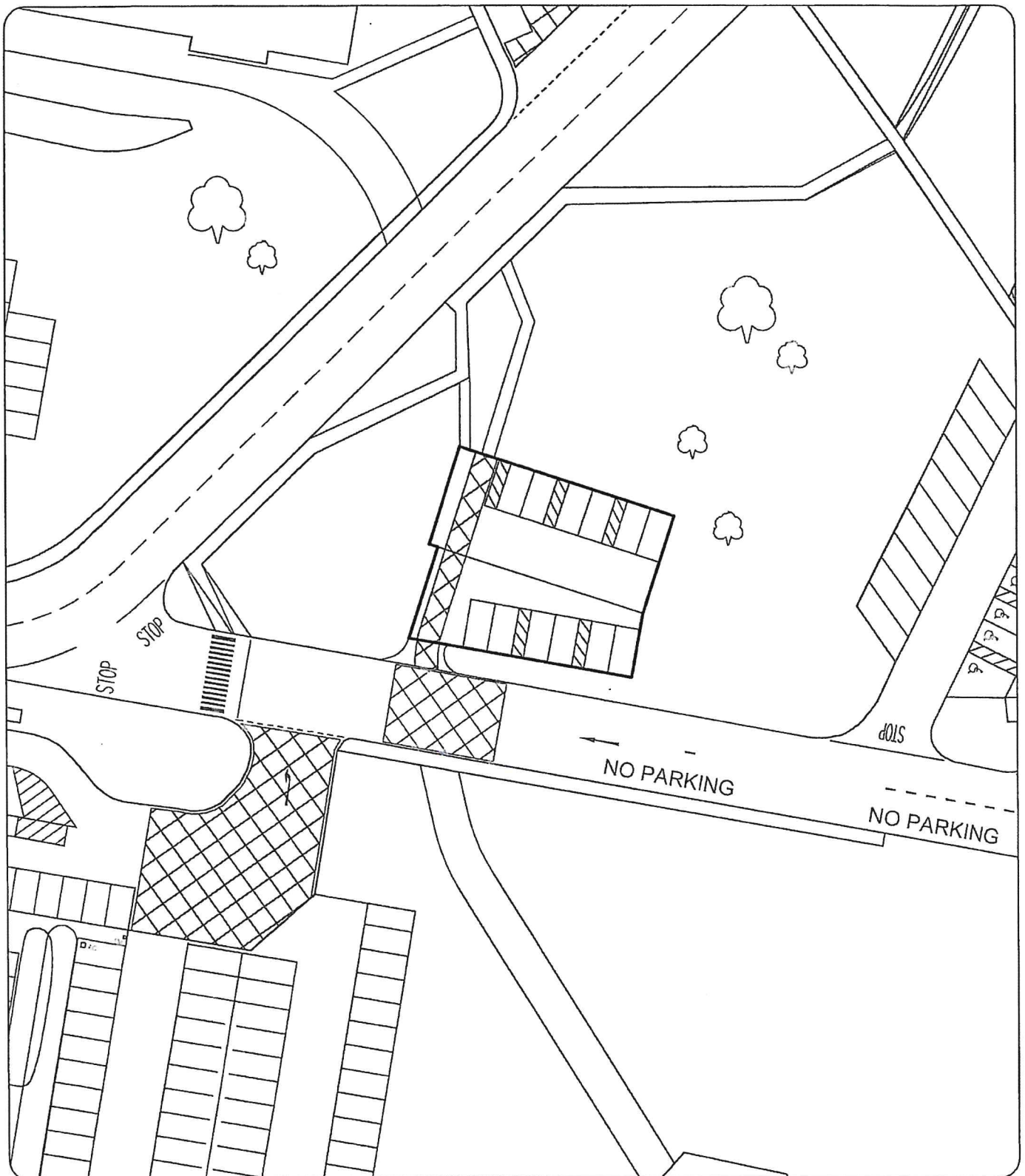


Scale
1/500 @ A4

Date
08 Jan 2015

Drawn by
JG

Drawing / Reference Number



**Borough Council of
King's Lynn &
West Norfolk**



Tel: (01553) 616200 Fax: (01553) 616682
Email: EDandP@west-norfolk.gov.uk

Title
QEH - Disabled Main
Car Park



Scale
1/500 @ A4

Date
08 Jan 2015

Project / Details
Parking Order

Drawn by
JG

Drawing / Reference Number